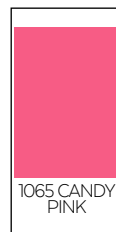
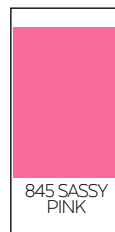
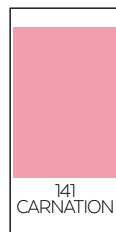
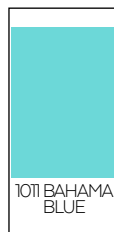
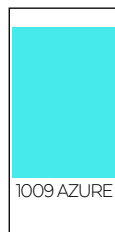
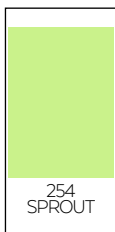
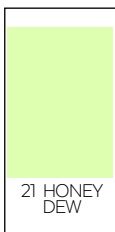
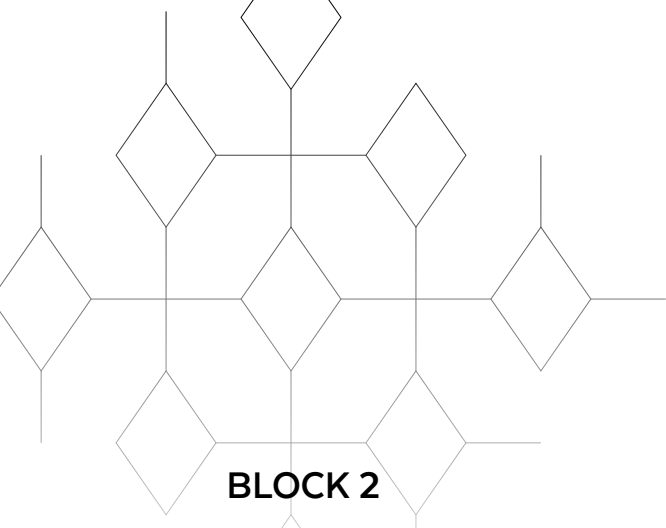


RAINBOW

BABY CRYSTAL LATTICE

pattern add on





HOW TO USE THIS PATTERN ADD-ON

All colours are KONA solids in the colours stated. Background is KONA Snow.

You will need the amounts stated in the first column.

Cut the required amount of squares and rectangles, referring to the sizing in the pattern. BLOCK 1 is not required for the baby quilt version.

Assemble the ED and SD units following pattern directions.

Assemble the blocks referencing colour placement in front photo of this pattern add-on. (Picture shows some prints used, but the instructions below are for a full solids quilt top.)

FABRIC AMOUNT	COLOUR	CUT	MAKE
FQ	CARNATION	[12] RECTANGLES	[4] ED UNITS
10" X 10"	SASSY PINK	[8] SQUARES	[2] SD UNITS
10" X 10"	CANDY PINK	[8] SQUARES	[2] SD UNITS
		[4] RECTANGLES	[1] ED UNIT

BLOCK 3

FABRIC AMOUNT	COLOUR	CUT	MAKE
FQ	HONEYDEW	[32] SQUARES	[8] SD UNITS
		[16] RECTANGLES	[4] ED UNITS
FQ	SPROUT	[16] SQUARES	[4] SD UNITS
		[32] RECTANGLES	[8] ED UNITS
FQ	PEAR	[32] SQUARES	[8] SD UNITS
		[16] RECTANGLES	[4] ED UNITS
FQ	PARAKEET	[16] SQUARES	[4] SD UNITS
		[32] RECTANGLES	[8] ED UNITS

BLOCK 4

FABRIC AMOUNT	COLOUR	CUT	MAKE
FQ	AQUA	[32] SQUARES	[8] ED UNITS
		[16] RECTANGLES	[4] SD UNITS
HALF YARD	AZURE	[32] SQUARES	[8] SD UNITS
		[48] RECTANGLES	[12] ED UNITS
HALF YARD	BAHAMA BLUE	[64] SQUARES	[16] SD UNITS
		[48] RECTANGLES	[12] ED UNITS
F ¹ / ₈	JAMAICA	[16] SQUARES	[4] SD UNITS