



#CottageTableCoasters

THE COTTAGE TABLE Circle Coaster



No. 1
The Homemaker Series

DIFFICULTY RATING:
Beginner Adventure



Masterclass
VIDEO SERIES



HANDMADE WITH ♥ IN THE ADELAIDE HILLS

PRINTABLE
TEMPLATES



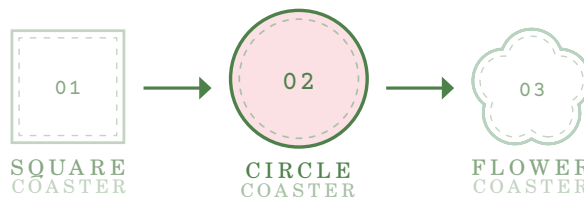
Your journey continues...



This Circle Coaster builds on the skills you've already practised in the Square Coaster and gently introduces a few new techniques—like sewing smooth curves, adding a ribbon tag, and stitching by hand.

Let's keep growing your confidence, one stitch at a time.

Ali x



THE SEWING INDEX

All the sewing terms in this pattern are further explained in this printable guide.

Download
bit.ly/sewing-index



PRINTABLE TEMPLATES

You'll find the templates on page 7-8.



Sew along with me!
Masterclass videos

Watch the Videos
bit.ly/coasters-masterclass

The Circle Coaster

COASTER	FINISHED SIZE	SEAM ALLOWANCE
02	4½" × 4½"	¼" (6mm)

Things you'll need

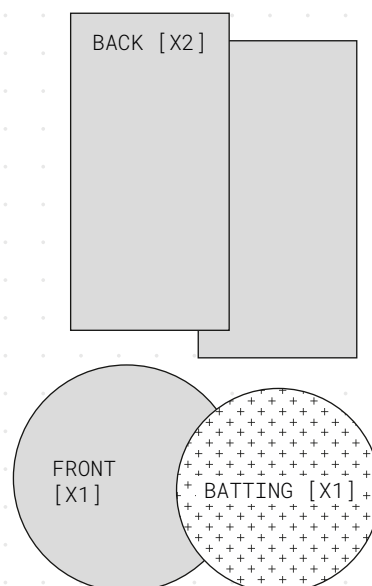
FABRIC & MATERIALS

- ☐ **Front Fabric** 6" x 6"
- ☐ **Back Fabric** 8" x 8"
- ☐ **Fusible Fleece or Batting** 6" x 6"
- ☐ **1" Length of Ribbon**
To make a tag
- ☐ **Perle 8 thread**
a medium weight glossy thread used for decorative stitching

REQUIRED TOOLS

- ☐ **Sharp scissors**
- ☐ **Small pointy scissors**
- ☐ **Pins**
- ☐ **Fabric pen**
- ☐ **Fabric glue**
- ☐ **Large eye needle**
(e.g. applique No. 9)

Exploded view



♦ Step 1

Getting Started

- Print off the **templates** from **pages 7 & 8**. Make sure your printer settings are set to 100% (actual size) and that scaling is turned off.
- Measure the **scale square** on the **templates** sheet—it should measure exactly 1" x 1".
- Cut out the **templates** for the **Coaster Front & Back** and the **Coaster Batting**. Set the stitching template aside until **Step 10**.

Using your **fabric pen**, trace the templates onto the wrong side (WS) of your fabric. (**Figs. 1 & 2**)

You'll need to trace:

- [1] **Front** fabric piece (5" circle)
- [2] **Back** fabric pieces (3½" x 7")

Using the smaller **Batting template**, trace:

- [1] **Batting** or **Fusible Fleece** piece (4½" circle)

Cut out your pieces with sharp scissors.



Video: Cutting Out with Confidence

bit.ly/confident-cutting

WATCH ►

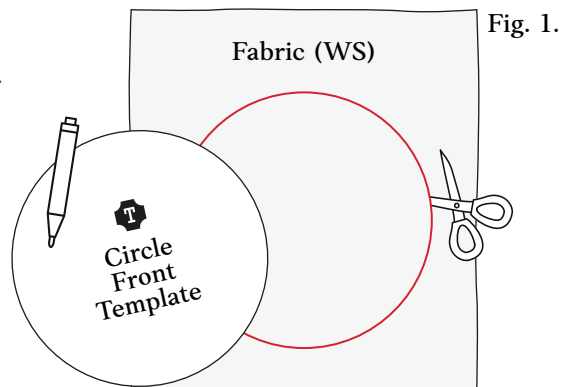


Fig. 1.

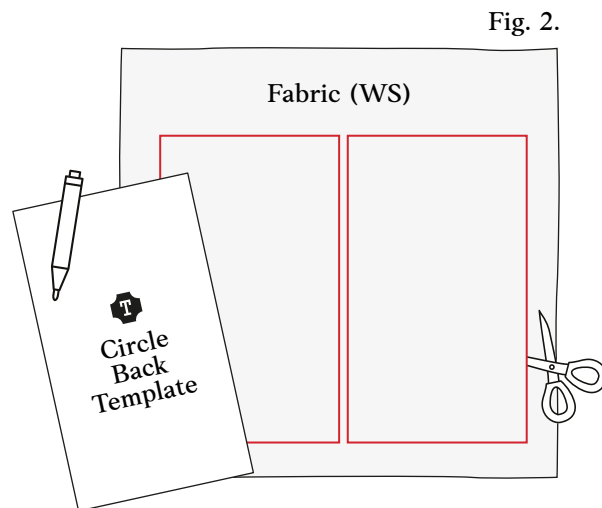


Fig. 2.

♦ Step 2

Join the Back Seam

Take one **Back** piece and mark a 1½" turning opening (a section you won't sew) in the centre of one long edge.

Place the two **Back** pieces **right sides together (RST)**, aligning the raw edges. Pin along the marked edge.

Sew this seam with a ¼" **seam allowance**, stopping at the first edge of the turning opening, then starting again at the other side and sewing to the end of the **seam**.

Be sure to **backstitch** at the beginning and end of each section to secure it. **Fig. 3.**

Press the **seam** to one side. **Fig. 4.**

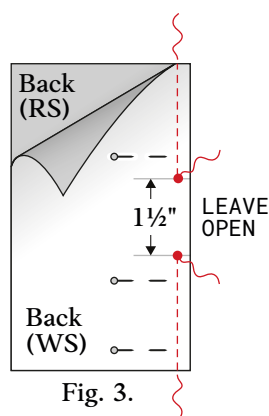


Fig. 3.

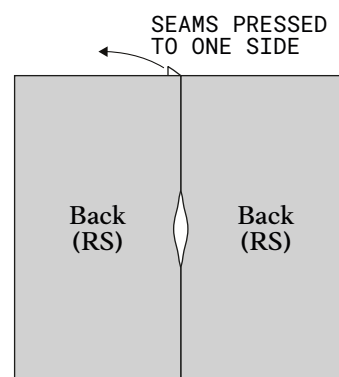


Fig. 4.

STEP 2 PROGRESS

- Mark a 1½" opening
- Pin the **Back** pieces together
- Stitch along the **seam** (remember to **backstitch**)
- Press the **seam** to one side



♦ Step 3

Add the Batting

- Place your **Front** fabric **wrong side** facing up.
Place the **Batting** or **Fleece** on top of the **Front** so it's evenly in the centre. *Fig. 5.*
 - If using **Fusible Fleece**, place the glue side down against the **wrong side** of the fabric, then cover with another scrap of fabric and press with an iron to fuse it in place.
 - If using regular **Batting**, **glue baste** in place using a few swipes of your glue stick.

For a reminder, see **Step 2** from the **Square Coaster** for more details on fusing **Fleece** and **glue basting**.

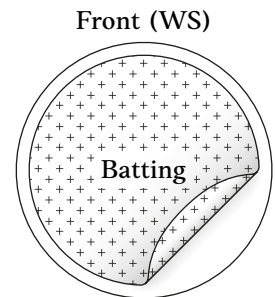


Fig. 5.

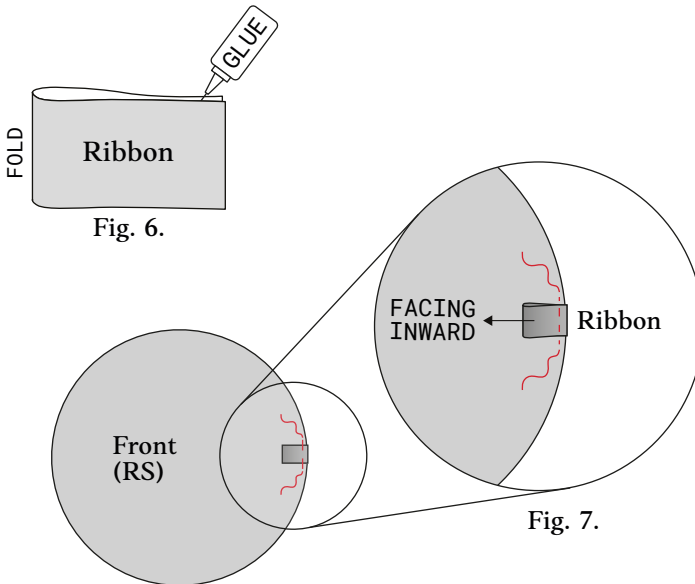


Fig. 6.

Fig. 7.

♦ Step 4

Add a Ribbon Tag (Opt.)

- Cut a 1" piece of **Ribbon** (or lace, leather, or cotton tape). Fold it in half so the ends are meeting, and **glue baste** them together. *Fig. 6.*
- With the **Front** facing **right side** up, pick a spot on the **raw edge** of the circle, and place the **raw edge** of the folded **Ribbon** on the edge of your fabric, (the folded edge of the **Ribbon** should be facing in toward the centre).
- **Baste** the **Ribbon** to the **Front**. *Fig. 7.*

♦ Step 5

Layer, Trace & Pin

- Lay the joined **Back** piece right side up, and place the **Front** fabric circle on top so the **right sides** are together (**RST**). (Remember the **Batting** should still be on the outside.)
- Mark your stitching line by tracing this again using the **Batting template**. *Fig. 8.*
- Centre the **Front** circle over the **Back**, and clip or pin the layers together around the edge of the circle. (Make sure your **Ribbon** tag is not on top of the **Back** seam as this will create unwanted bulk.) *Fig. 9.*

You've done this before! See **Steps 3 & 4** of the **Square Coaster** if you'd like a refresher.

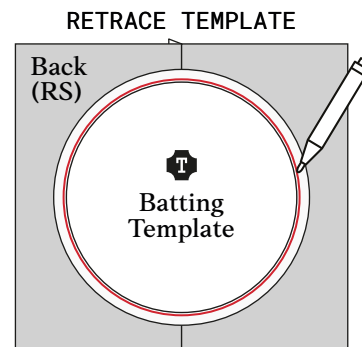


Fig. 9.

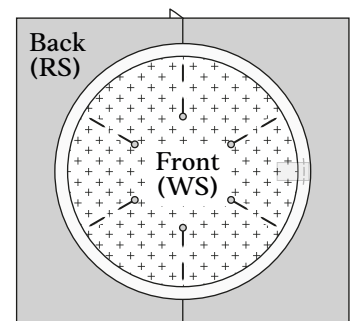


Fig. 8.

This time we will turn the Coaster right side out through the Back opening. This will keep your Circle nice and round.



♦ Step 6

Stitch Around the Coaster

- Set your **stitch length** to 2.5mm, and stitch along the marked line, or use the edge of the **Batting** as a guide and stitch right up against it. Sew slowly around the curve, stopping to raise the presser foot and re-adjust every few stitches if needed.
- Remember to **backstitch** to secure the stitches when you reach the beginning again.

Fig. 10.

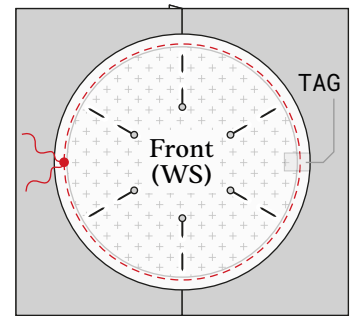


Fig. 10.

Sewing a curve takes a little more patience to keep the seam allowance even and the layers together. Take it slowly, stop when you need to, lift your machine foot & adjust your fabric gently as you go. You've got this!



Step 7

Trim & Turn

We're going to trim away the excess fabric on the **Back** and the **Front**.

- Trim the **seam allowance** close to the stitching line, so it's approx 1/8" wide. Trim it a bit 1/4" wide across the tag. *Fig. 11.*
- Turn your coaster **right side** out through the **Back** opening, being careful not to tug hard on the opening. *Fig. 12.*

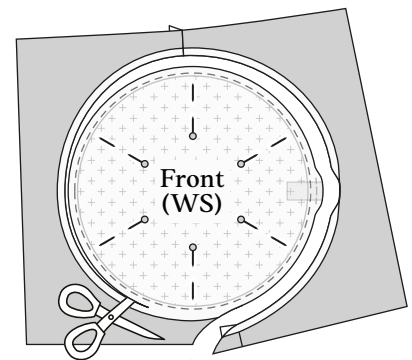
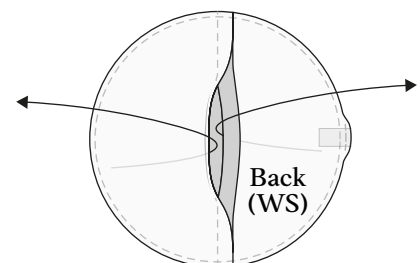


Fig. 11.

Trimming a seam down helps the seams on a curve lie flat and reduces any bulk, giving your coaster a smoother, more even edge when turned right side out.

Fig. 12.



TURN RIGHT SIDE OUT

Step 8

Shape & Press

- Use your fingers to firmly push out the curved seam edge and smooth the shape. Pull gently on the **Ribbon** tag to make it protrude evenly out of the seam.
- Reach inside the opening and run your fingernail around the **seam** to help define the curve.
- Use your iron with some steam to **press** the coaster flat, paying special attention to keeping the curve smooth and even. Aim to get the **seam** to sit right on the edge of the circle so no backing fabric peeks around to the front—or vice versa.

Steam is your secret weapon when it comes to shaping a project. Warm fibres are more flexible—allowing you to smooth out imperfections, refine edges, and gently mold your project exactly how you want it.

Step 9

Press & Close the Opening

- On the **Back**, tuck in the **raw edges** of the turning opening and **press** them to match the rest of the seam.
- Glue **baste** the opening closed with a thin line of glue, then press it again to set it dry. **Fig. 13.**

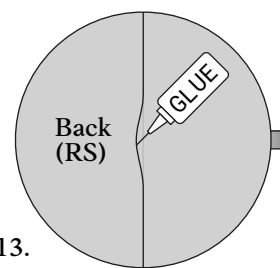


Fig. 13.

Step 10

Add Decorative Hand Stitching

We're going to hand sew a row of decorative stitches around the edge of the **Circle** for a beautiful handmade finish.

- Cut out the **Stitching template**, then centre on the **Front** of the **Circle** and trace the outline with your fabric pen.
- Thread your needle with **Perle 8 cotton** and tie a knot in the end. Slide the needle in between the layers on the **Back** and bring it up on the line on the **Front**. Bury the knot in the end of the thread by giving it a short, sharp tug to make it snap inside the layers.
- Sew with **running stitch** following the line around the **Circle**, making your stitches about $\frac{1}{8}$ "– $\frac{1}{4}$ " long. Continue around the **Circle** until you reach where you started. Tie another knot and bury it between the layers again. Trim the thread. **Fig. 14.**

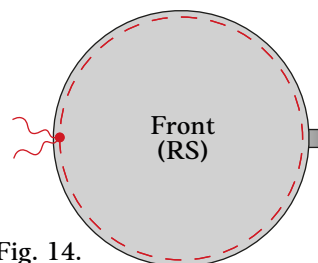


Fig. 14.

▶ **Video: Tying a Quilter's Knot**
bit.ly/tie-quilters-knot

▶ **Video: Hiding Your Knot**
bit.ly/hidden-knot

Running stitch is a basic hand stitch made by weaving the needle in and out of the fabric in a straight line. Pull your stitches so they're snug against the fabric, but not so tight that they pucker the fabric.

Give your coaster a final press.

Step 11

Celebrate & Share

Congratulations! You're two **Coasters** down—you're on a roll! This one introduced curves, hand stitching, and a little bit of embellishment. You're learning real, useful sewing skills with every stitch.

Put this sweet little **Coaster** to work under a favourite mug, and don't forget to share your progress using **#CottageTableCoasters** so we can all cheer you on!

Ready for the final one? The third **Coaster** brings in a little appliqué magic to finish your set with a flourish. Let's go!

Alicia x

Skills you've learned



- How to sew a curve
- How to add a decorative tag
- How to turn right side out through a back opening
- How to sew a decorative row of running stitch



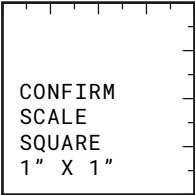
NEXT UP


The Flower Coaster
 Continue your adventure!



The Cottage Table


Circle Coaster Templates



 **PRINTING AT 100% SCALE**

Ensure the scale square measures precisely 1" x 1". If you can't get this to measure accurately, or have other printing issues, please visit the link below:

www.arabesque-scissors.com/print-help

 **FABRIC ORIENTATION MARKER**

Ensure the arrow on this icon aligns to the top when using fabric with a directional pattern.

